



HALE HOUSE

EVENT LOUNGE & MEETING ROOMS

Created by
**THE
HOWARD
de
WALDEN
ESTATE**

In partnership with **SPACEMADE**

Part of **H HARLEY STREET
HEALTH DISTRICT**



THE EVENT LOUNGE AT HALE HOUSE

In the heart of Marylebone, perfectly placed on Portland Place, our flexible event space is designed to make every gathering seamless and memorable.

Host up to 150 guests for conferences, training sessions, product launches, or evening receptions. With built-in AV and dedicated on-site support, you can focus on your event while we handle the details.

Enjoy refreshments throughout the day and exceptional catering from our hand-picked local partners, delivering a polished experience from start to finish.

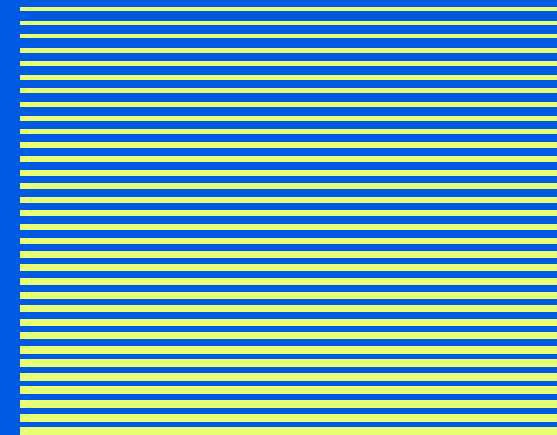
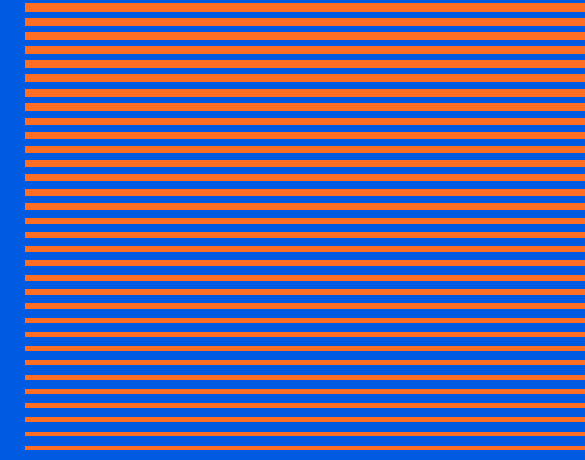
LOOK INSIDE



A STRIKING SPACE FOR UNFORGETTABLE EVENTS

Bathed in natural light and framed by soaring 14-foot ceilings, the lounge spans 2,332 square feet of flexible space designed to impress.

Equipped with state-of-the-art AV technology, it sets the stage for high-impact events, from corporate functions and brand activations to private receptions and product launches.

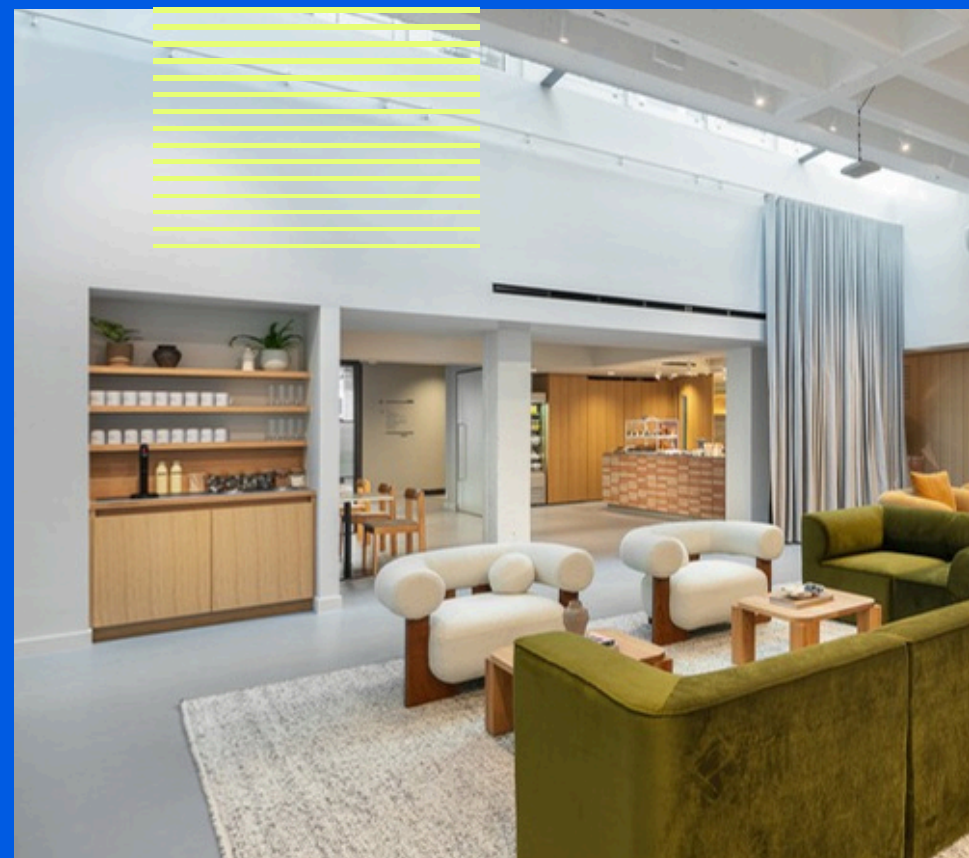




TECHNOLOGY

Zoom powered conference room includes:

- 1 x mobile screens: 85"
- 2 x 180° cameras
- 2 x handheld & 2 x lapel microphones
- Wireless Sharing Adapter and wired
- HDMI, USB and USB-C connections
- 2000W audio setup / background music



AMENITIES

- Kitchen bar space with unlimited Tea / Coffee & Filtered Water
- Ample fridge space and an ice machine
- Scene lighting (stage, main floor, kitchen) & mood lighting for intimate ambiance
- Fully equipped prep kitchen

*Up to 30ppl included in price; £5.00pp thereafter



PRICING

Per hour: £450+VAT

Half day: £1,700+VAT

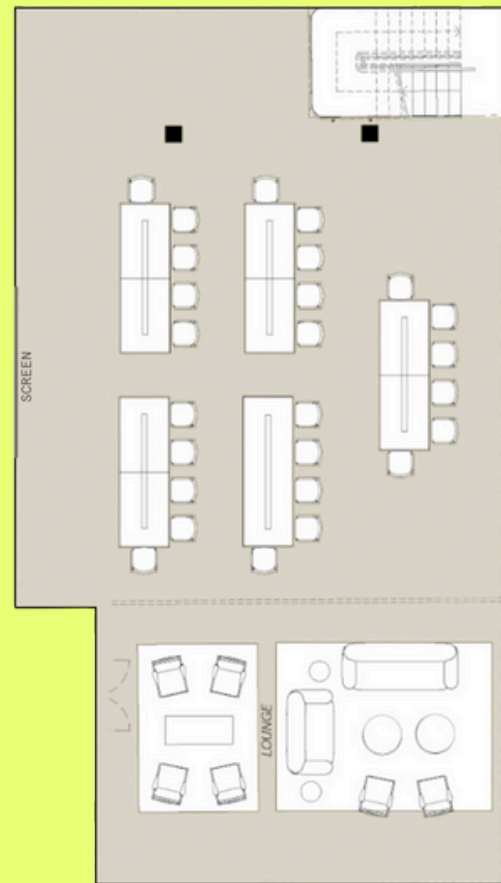
Full day: £3,500+VAT

[ENQUIRE NOW](#)



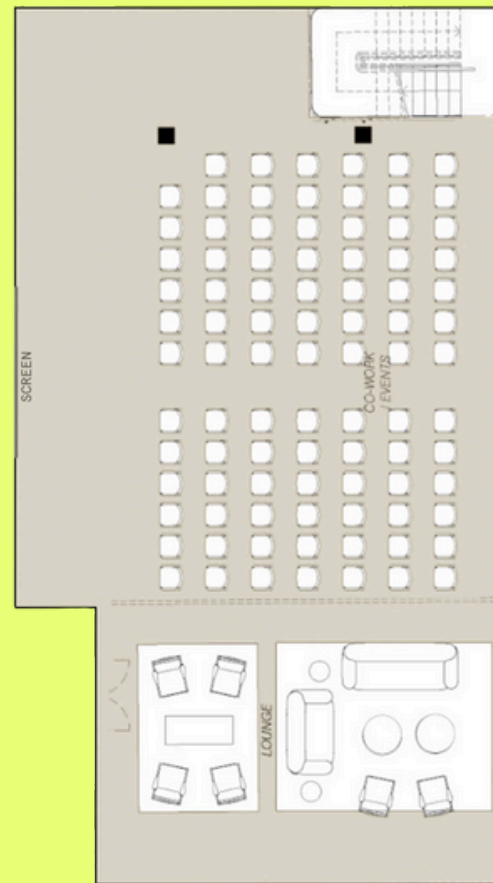
EVENT SPACE FLOOR PLANS

Offered empty as a blank canvas to put your stamp on or in one of set ups below, we can adapt our space to work for your event.



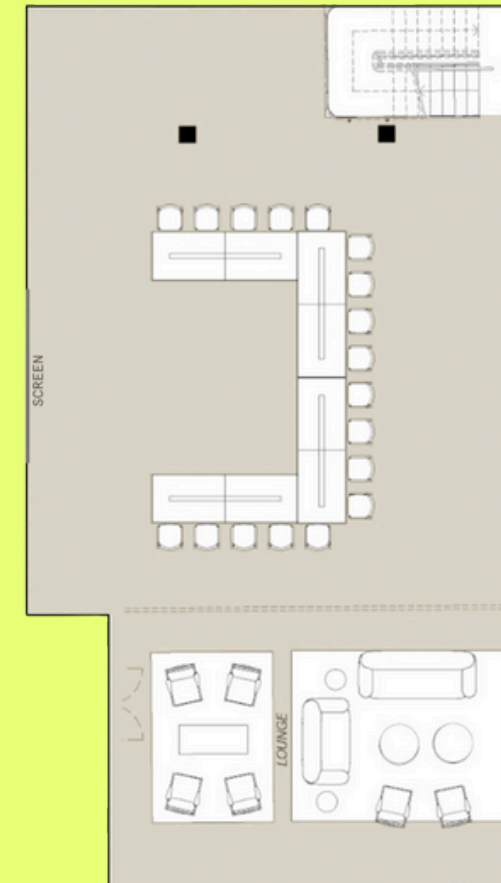
CLASSROOM

Up to 26 people



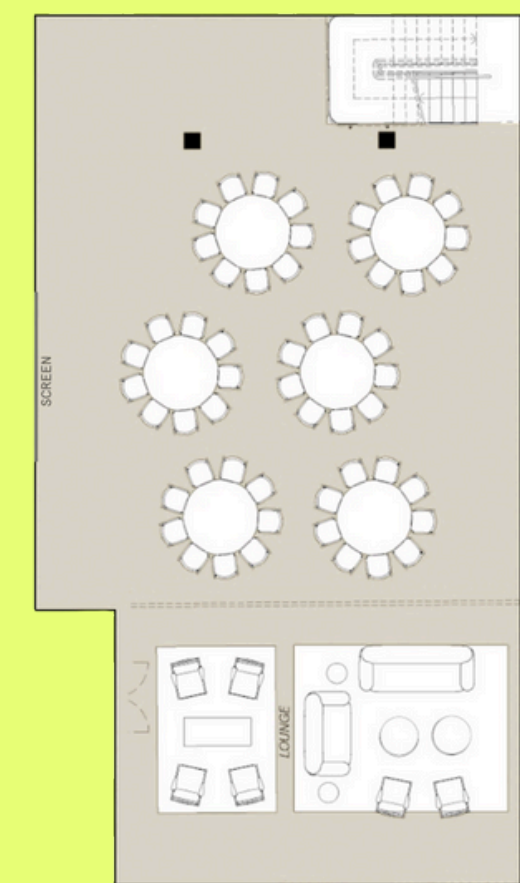
THEATRE

Up to 90 people



U SHAPE

Up to 18 people



ROUNDS

Up to 54 people



KARIKÓ

Up to 10 people
From £75 p/h



WEISSMAN

Up to 8 people
From £65 p/h

NEED SPACE FOR SMALLER MOMENTS?

For breakout sessions, team huddles, or private client meetings, our meeting rooms offer a focused setting alongside your main event.

Thoughtfully designed and equipped with state-of-the-art tech, premium amenities, and effortless online booking, they comfortably host up to 20 people — giving you the flexibility to make every moment count.



OSLER

Up to 5 people
From £40 p/h



KARIKÓ & WEISSMAN

Up to 18 people
From £130 p/h



GALEN

Up to 6 people
From £65 p/h



CORMACK (SCREENING ROOM)

Up to 20 people
From £165 p/h



FOOD FOR THOUGHT

Our trusted Food & Beverage partner, Humdingers, brings flavour and flair to every event. This independent London-based caterer offers bespoke menus tailored to your vision, as well as effortless, ready-to-go packages, making it simple to serve something truly memorable.

[VIEW MENU](#)



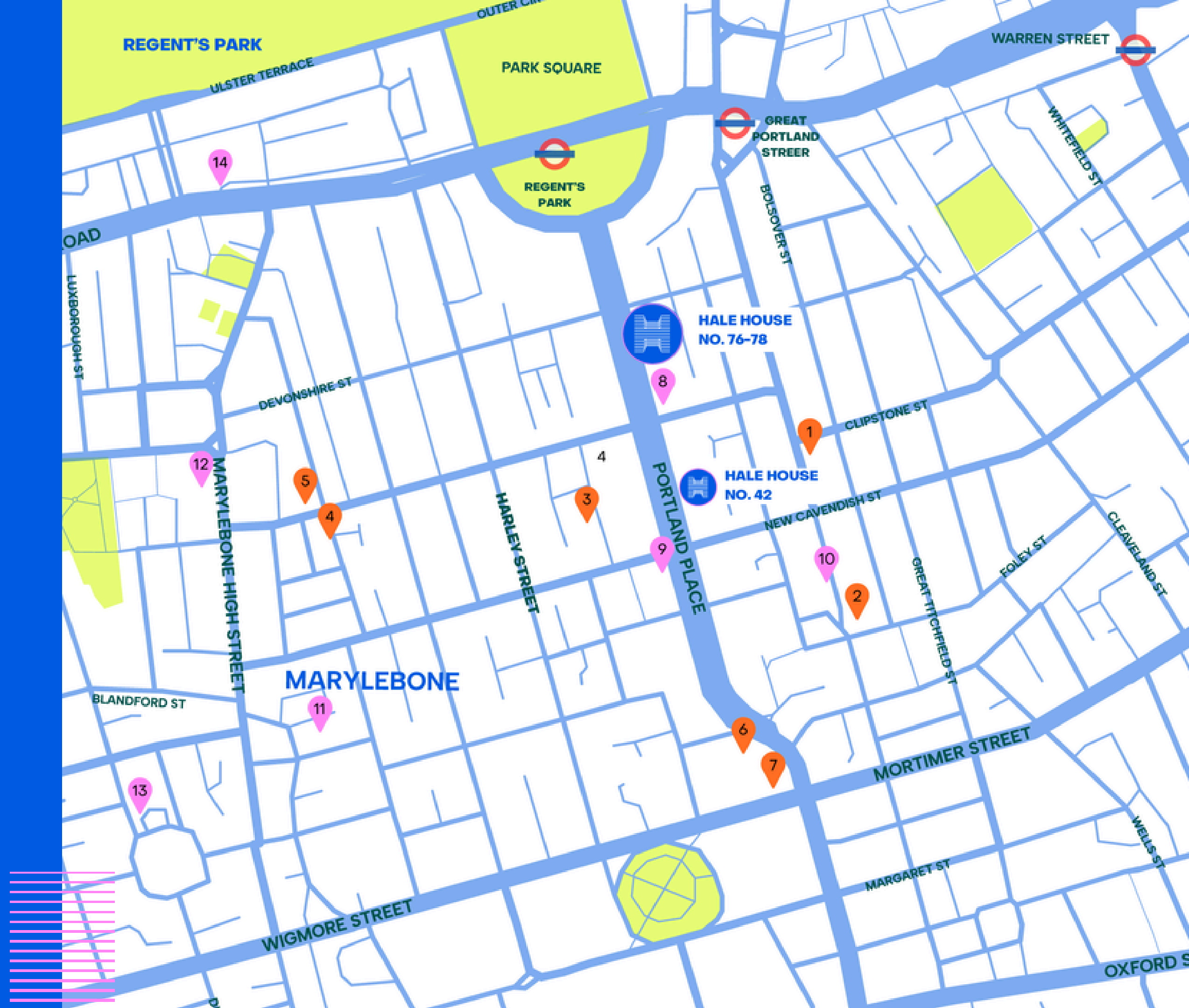
WHAT'S IN THE NEIGHBOURHOOD

EAT & DRINK

- 1 Caravan
- 2 Bennie
- 3 The Jackalope & LIU Xiaomian
- 4 Naroon Marylebone
- 5 WatchHouse Marylebone
- 6 Artesian
- 7 The Wigmore

SEE & DO

- 8 Royal Institute of British Architects (RIBA)
- 9 Anaesthesia Heritage Centre
- 10 Java Whiskers Cat Café
- 11 Third Space
- 12 Daunt Books
- 13 The Wallace Collection
- 14 Royal Academy of Music



GET IN TOUCH TO DISCOVER MORE & ARRANGE A VISIT

HANNAH CHRISTIE CHARLES

Events & Meeting Rooms Sales Manager

T: 0204 512 6562 ext 968

E: events@spacemade.co

[GET IN TOUCH](#)

